



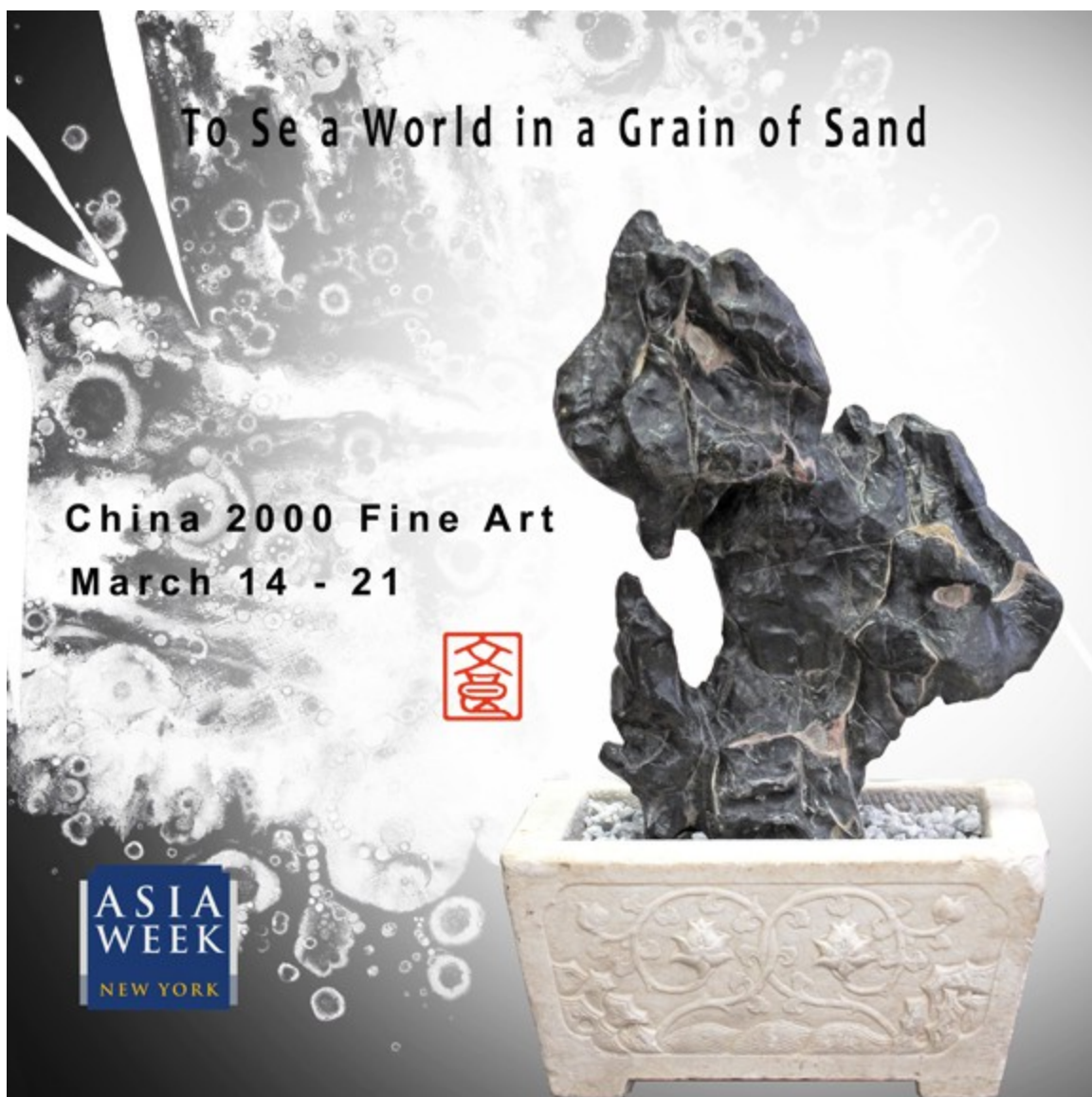
CHINA
2000
FINE
ART

TO SEE A WORLD IN A GRAIN OF SAND

EXHIBITION DATES: MARCH 14 – 21, 2014

ASIA WEEK WEEKEND: MARCH 15 and 16, 11:00 – 5:00

A grain of sand, a leaf of grass, our greatest poets see the boundless in the smallest things around us. From a branch of plum blossoms we can create an entire tree, an entire forest, from a single rock an entire mountain. We are but small beings in the landscape; yet, we can create from ourselves endless universes of meaning.





CHINA
2000
FINE
ART



Zhang Ling (late 15th - early 16th century, Ming dynasty), *Exchanging the White Goose for the Classic Text*, Framed, ink and color on paper, 27 x 10.5 in (68 x 26.8 cm)



CHINA
2000
FINE
ART



Xie Zhiguang (1899-1976), *Appreciating the Plum Blossom*, Hanging scroll, ink and color on paper, 53.5 x 11.75 in (136 x 30 cm)



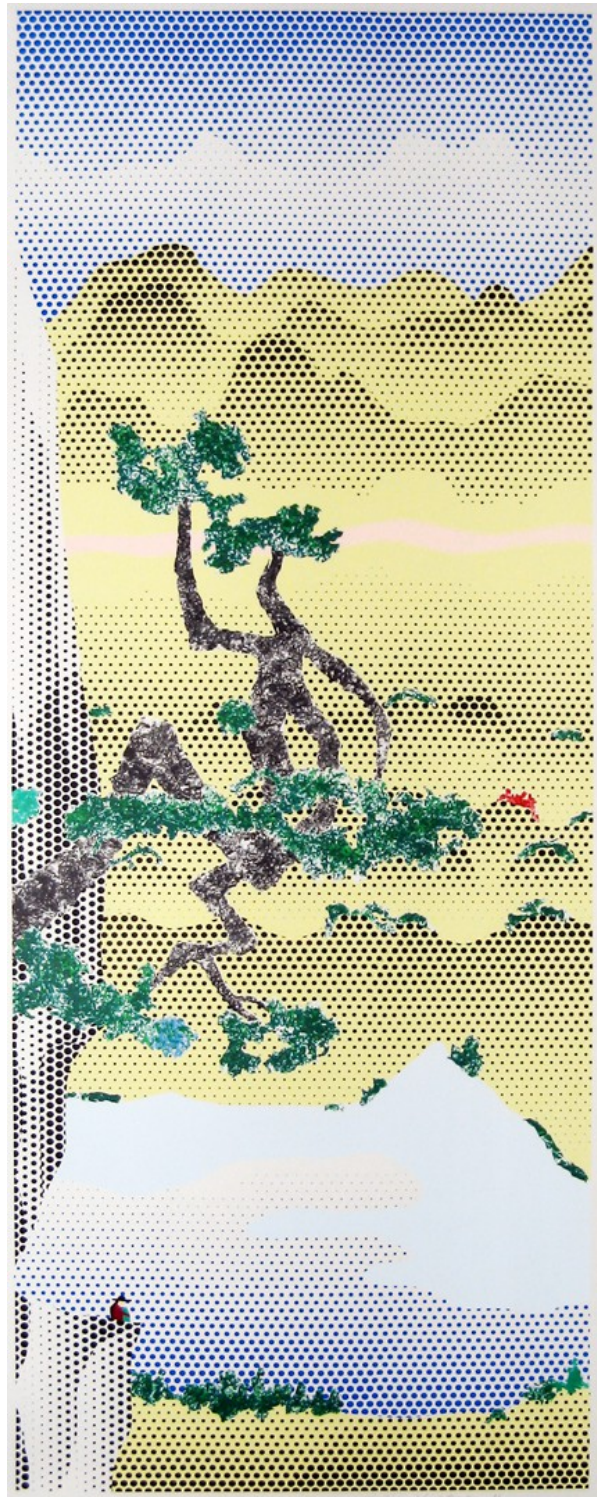
CHINA
2000
FINE
ART



Shao Yixuan (1886-1954), *Enjoying the Landscapes*, 1937, Hanging scroll, ink and color on paper, 41 x 14.25 in (104.1 x 36.2 cm)



CHINA
2000
FINE
ART



Roy Lichtenstein (1923 – 1997), Landscape with Poet
1996, 16-color Lithograph and Screenprint in 19 runs
90.5 x 36.125 in (229.9 x 91.8 cm)
Edition: 60 plus 12 AP plus 6 SP*

177 EAST 87th STREET, SUITE 601, NEW YORK, NY 10128 TEL: (212) 472 – 9800
www.china2000fineart.com e-mail: c2000fa@aol.com



CHINA
2000
FINE
ART



Dr. Sesin Jong (b.1941), *When Shall You Return*, 2013, Framed, ink and color on paper
24.5 x 37.25 in (62.2 x 94.6 cm)



CHINA
2000
FINE
ART



Annysa Ng, *Embrace Nothingness II*, 2014, Ink and acrylic on canvas, 40 x 40 in (101.6 x 101.6 cm)



CHINA
2000
FINE
ART



Annysa Ng, Moon on Laurel, 2013, Acrylic on silk, ink on Xuan paper, 42 x 30 in (106.7 x 76.2 cm)



CHINA
2000
FINE
ART



Lingbi Scholar Rock with Carved Marble Base (Ming dynasty)

Rock: 22.75 (H) x 14.75 (W) x 4.75 (D) in

Base: 8 (H) x 16 (W) x 10 (D) in



CHINA
2000
FINE
ART



Lingbi Rock with Hongmu Base

23 (W) 12.5 (D) 19 (H) in (including the pedestal)

58.4 (W) 31.8 (D) 48.3 (H) cm (including the pedestal)



CHINA
2000
FINE
ART



White Taihu Rock with Hongmu Base

18.5 (W) 10.75 (D) 42.75 (H) in (including the pedestal)
47 (W) 27.3 (D) 108.6 (H) cm (including the pedestal)

177 EAST 87th STREET, SUITE 601, NEW YORK, NY 10128 TEL: (212) 472 – 9800
www.china2000fineart.com e-mail: c2000fa@aol.com